

# Atholton Elementary School

## PROFILE

2008-09

6700 Seneca Drive • Columbia, MD 21046 • 410.313.6853 • <http://aes.hcps.org/>



The Mission at Atholton Elementary School is: Active Learning, Excellent Teaching, and Success for all! Through the collaborative efforts of staff, students, and parents, we strive to provide an outstanding education for all students within a safe and welcoming environment.

Atholton Elementary School continues to partner with Loyola College as a Professional Development School for teacher interns. These interns work with a teacher mentor as they pursue a degree in Elementary Education. This program benefits our students and our community as we celebrate newcomers to the field of education.

Our commitment to student achievement and safe schools is supported by our focus on the curriculum and our Kids with Character program. Character Education is taught in the classroom by teachers and the guidance counselor, on a regular basis. Students are recognized in a variety of ways for upholding the values of a good citizen. Celebrating students and staff are important aspects of our program as we work to promote a safe school where learning and caring are key.

Talented staff members, involved families, and respectful students work together to make Atholton Elementary a great place to be.

Heidi Balter Principal  
Debra Anoff, Assistant Principal

### Fast Facts

**Facility opened** - 1961

**Additions/Renovations**

1980 (A), 2001 (R), 2002 (R), 2006, 2007

**School Capacity:** 387

*(This does not include additional capacity provided by 2 portable classrooms.)*

**Total Enrollment (PreK-5):** 442

**Student Mobility 2007-08**

6.0% Entrants

7.7% Withdrawals

**Ethnicity**

White 56.3%

African American 25.6%

Asian 8.8%

Hispanic 4.3%

Native American 0%

Unidentified 5.0%

**Students Receiving Special Services 2007-08**

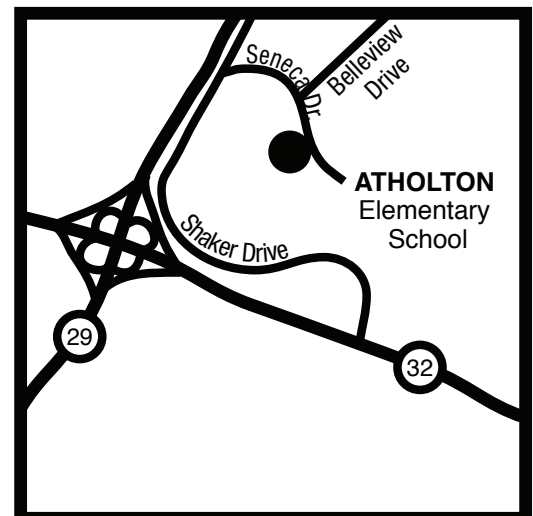
Title I 0%

Ltd. English Proficient 2.9%

Free/Reduced Lunch 15.0%

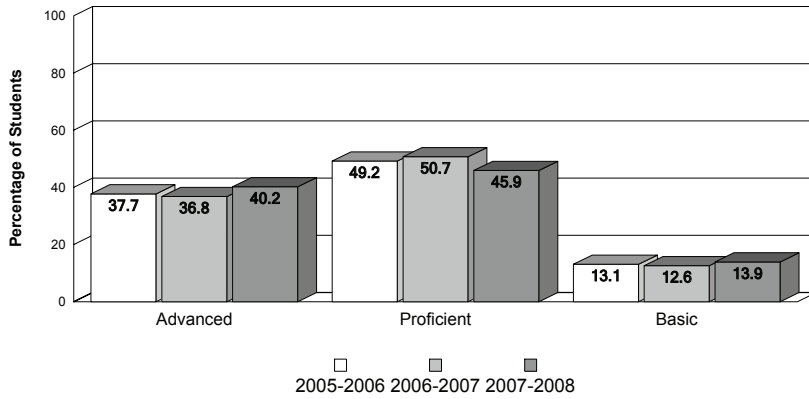
Special Education 10.5%

**PTA members:** 320

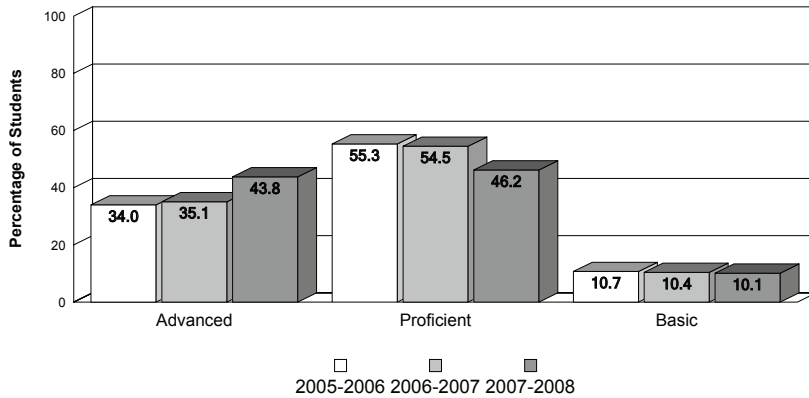


## Achievement Data

### Atholton Elementary School MSA - Mathematics



### MSA - Reading



### MSA Standards - Percent Advanced/Proficient

School Year	MSDE AYP Standards		Howard Cty Standard	Atholton ES	
	Reading	Mathematics		Reading	Mathematics
2005-2006	62.5	58.8	70.0	<b>89.30</b>	<b>86.90</b>
2006-2007	67.2	63.9	70.0	<b>89.60</b>	<b>87.40</b>
2007-2008	71.8	69.1	70.0	<b>89.90</b>	<b>86.10</b>

## Accomplishments

- Black Saga Second Place County Winners
- Simulated Congressional Hearings
- Cultural Proficiency Cadre
- Technology Cadre

## Special Programs

- Positive Behavior Intervention and Support School Wide Behavior Program
- Core Essential Character Education Program
- Math Tutoring Program
- Family Math and Reading Nights
- Students for Safe Schools
- Comprehensive Cultural Arts Programs
- Chesapeake Bay Trust Grant 2008