

Centennial Lane Elementary School

PROFILE

2008-09

3825 Centennial Lane • Ellicott City, MD 21042 • 410.313.2800 • <http://cles.hcps.org>



Centennial Lane Elementary School (CLES) is located in a beautiful residential area in the heart of Ellicott City. This learning community is built upon the belief that excellence at CLES rests upon a collaborative effort of the staff, students and parents. Our parent representatives are active participants in the decision making and service delivery processes as members of the School Improvement Team and PTA Executive Board. They respond to the various needs of students by sponsoring many extension activities such as the Cultural Arts program and After School Enrichment Program.

Our theme for this year is Expanding the Minds, Aligning the Efforts. Students are encouraged to set goals, use creativity, and apply technology. Our staff enjoys focused professional development activities in Cultural Proficiency, technology, brain-based teaching, as well as the collaboration in problem solving to address students' needs. Our parents welcome the many outreach efforts such as the Math Night and the Parent and Child Cultural Connection program, aimed to promote educational partnership.

We are proud of the recognition by the Maryland State Department of Education and the United States Department of Education as both a state and national Blue Ribbon School in 2004. We strive to maintain excellence not only in the academic and related arts subjects, but also in character building. In 2008, CLES was one of seven schools in the nation to receive the Core Essential Award from Chick-fil-A in character building.

With our motto of Respect, Responsibility, and Results, CLES staff and parents work hand-in-hand to educate our students to be world-class citizens.

Florence Hu, Principal
Barbara White, Assistant Principal

Fast Facts

Facility opened - 1973

Additions/Renovations
1987(A), 2007(R), 2008(A)

School Capacity: 628
(This does not include additional capacity provided by 3 portable classrooms.)

Total Enrollment (K-5): 637

Student Mobility 2007-08

9.5% Entrants
2.4% Withdrawals

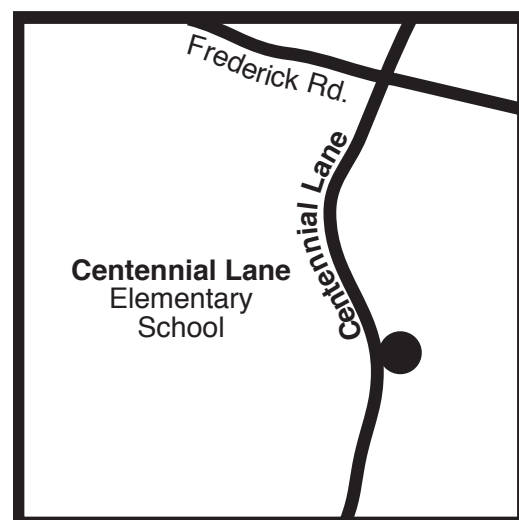
Ethnicity

White	55.6%
African American	4.9%
Asian	31.7%
Hispanic	3.3%
Native American	0.2%
Unidentified	4.4%

Students Receiving Special Services 2007-08

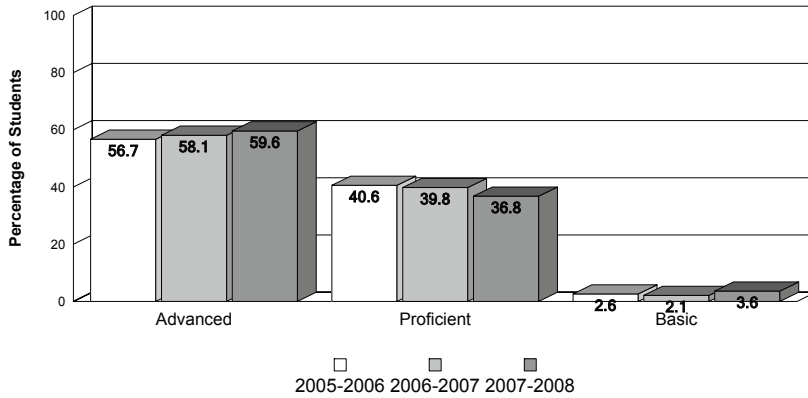
Title I	0%
Ltd. English Proficient	3.8%
Free/Reduced Lunch	3.6%
Special Education	7.1%

PTA members: 611

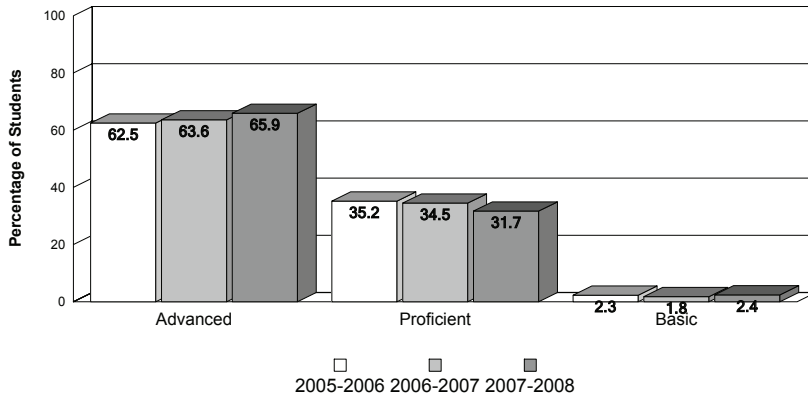


Achievement Data

Centennial Lane Elementary School MSA - Mathematics



MSA - Reading



MSA Standards - Percent Advanced/Proficient

School Year	MSDE AYP Standards		Howard Cty Standard	Centennial Lane ES	
	Reading	Mathematics		Reading	Mathematics
2005-2006	62.5	58.8	70.0	97.70	97.40
2006-2007	67.2	63.9	70.0	98.20	97.90
2007-2008	71.8	69.1	70.0	97.60	96.40

Accomplishments

2008

- National Core Essential Award by Chick-fil-A
- NAACP Distinguished School Award
- Special Education Team Recognition by the Howard County Special Education Community Advisory Committee
- All County Band-12 students

2007

- Awarded Grant by Chesapeake Bay Trust for The Living Classroom
- Highest donation to Jump Rope for Heart
- Second highest student participation in Howard County Library Summer Reading Club
- Special Education Team Recognition by the Howard County Special Education Community Advisory Committee

2006

- Awarded Grant in Designing Quality Inclusive Education
- All County Band-16 students
- GT Enrichment Orchestra-10 students
- Howard County Children's Chorus-9 students
- Second Place (Region)-The Stock Market Game, GT Program

Special Programs

- Educational Partnerships: 2 (Chevy Chase Bank, Towson University Professional Development School)
- Parent and Child Cultural Connection Program (PCCCCP)
- Science, Technology, Engineering, Math (STEM)
- PTA Cultural Arts Program
- PTA After School Enrichment Program
- Towson University Professional Development School Intern Program
- Developmental Assets Building Program
- Core Essential Character Education Program
- Chesapeake Bay Drainage Stenciling Program
- Mud Club